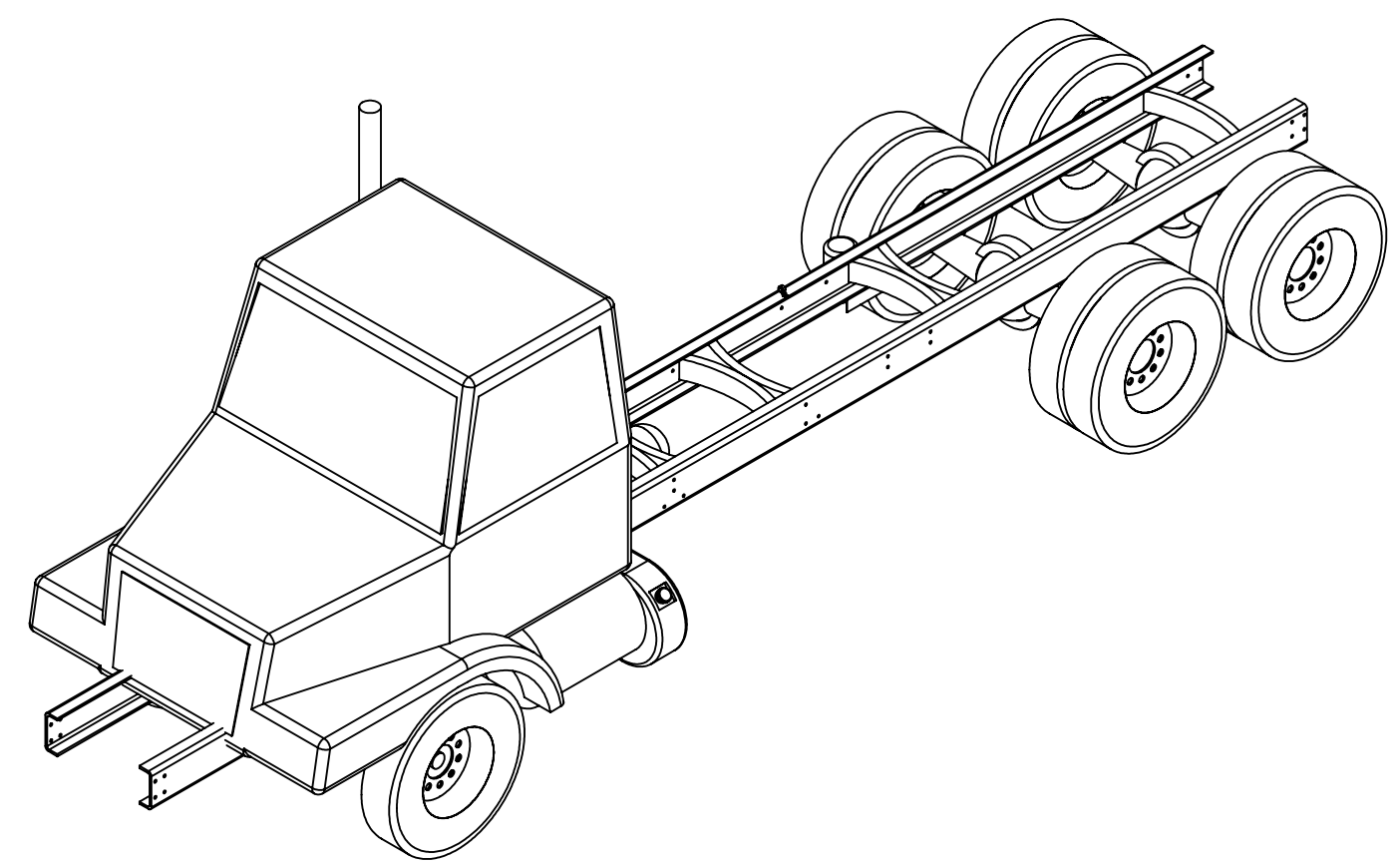


8 7 6 5 4 3 2 1

REVISIONS				
REV #	ECO #	DESCRIPTION	DATE	APPR
H		SHEET3 – REMOVED DIM FROM FRONT AXLE. SHEET4 – REMOVED DIM FROM FRONT AXLE. SHEET5 – DELETED SHEET6 – ADDED 135" NO FLY ZONE DIM. SHEET7 – REVISED HIGH HP HEADING, SFA CONFIGURATION, 450HP WAS 435HP, BATTERY LOCATION, FRONT AXLE WEIGHTS.		

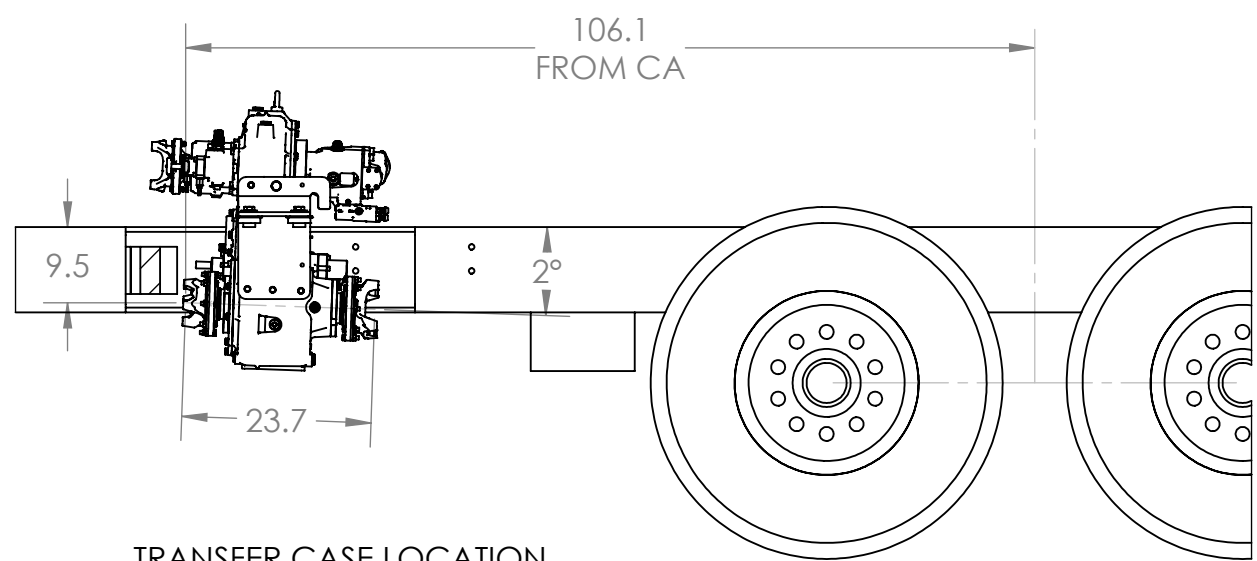
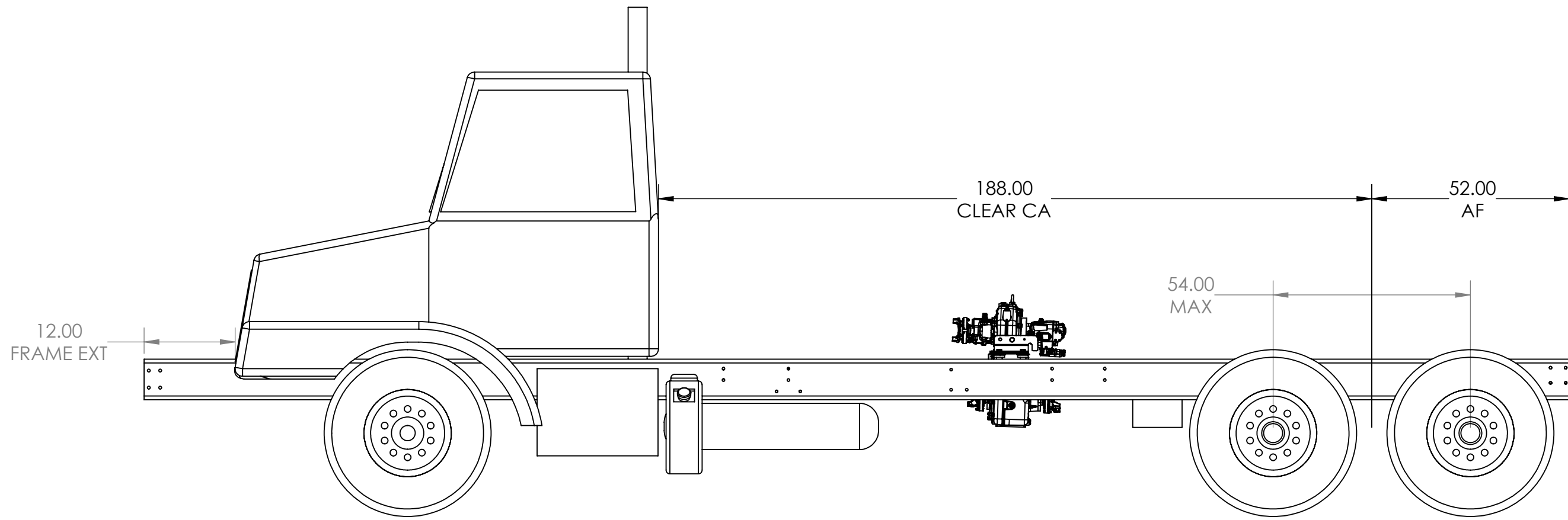
# 2015 CAMEL 1200 CHASSIS REQUIRMENTS



	NAME	DATE	
DRAWN BY	M. Jacobson	08/08/2014	
ENG APPR.	M. Jacobson	09/09/2014	
MFG APPR.			TITLE: ASSY, CHASSIS STOCK
MATERIAL: □ ( ) <b>PROPRIETARY AND CONFIDENTIAL</b> THE INFORMATION CONTAINED IN THIS DRAWING IS THE SOLE PROPERTY OF SUPER PRODUCTS LLC.. ANY REPRODUCTION IN PART OR AS A WHOLE WITHOUT THE WRITTEN PERMISSION OF SUPER PRODUCTS IS PROHIBITED.			UNLESS OTHERWISE SPECIFIED: DIMENSIONS ARE IN INCHES TOLERANCES ARE: X.X ± 0.100 X.XX ± 0.060 X.XXX ± 0.030 ANGULAR: MACH ± 1° BEND ± 2° INTERPRET GEOMETRIC TOLERANCING PER: ASME Y14.5
DWG. NO.		REV	
<b>0024917</b>		<b>H</b>	
SIZE B	SCALE: 1:96	WEIGHT:	SHEET 1 OF 6

8 7 6 5 4 3 2 1

# OVERALL CHASSIS DIMENSIONS

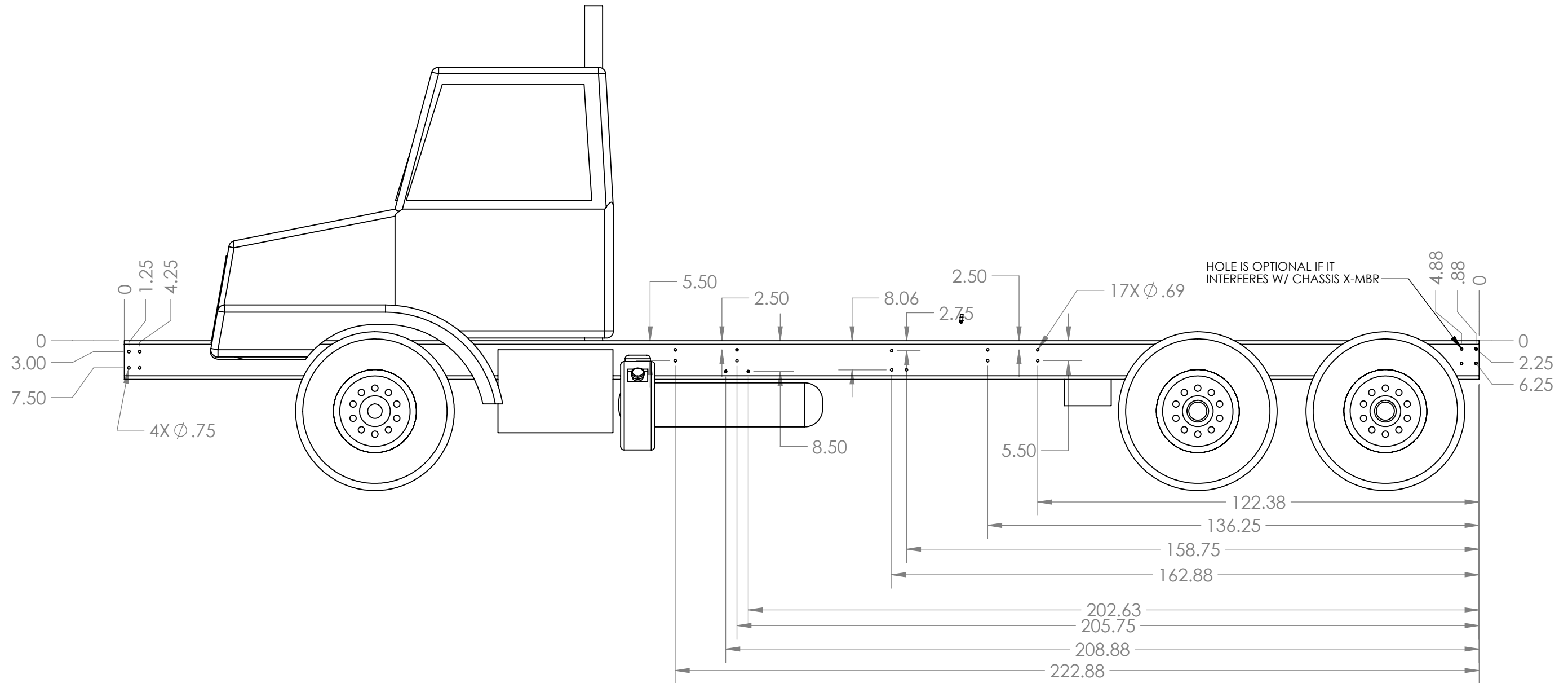


TRANSFER CASE LOCATION

NOTE:  
OVERALL LENGTH WITH SP  
COMPONENTS IS 39 FEET.

DWG. NO. <b>0024917</b>			REV <b>H</b>
SIZE B	SCALE: 1:96	WEIGHT:	SHEET 2 OF 6

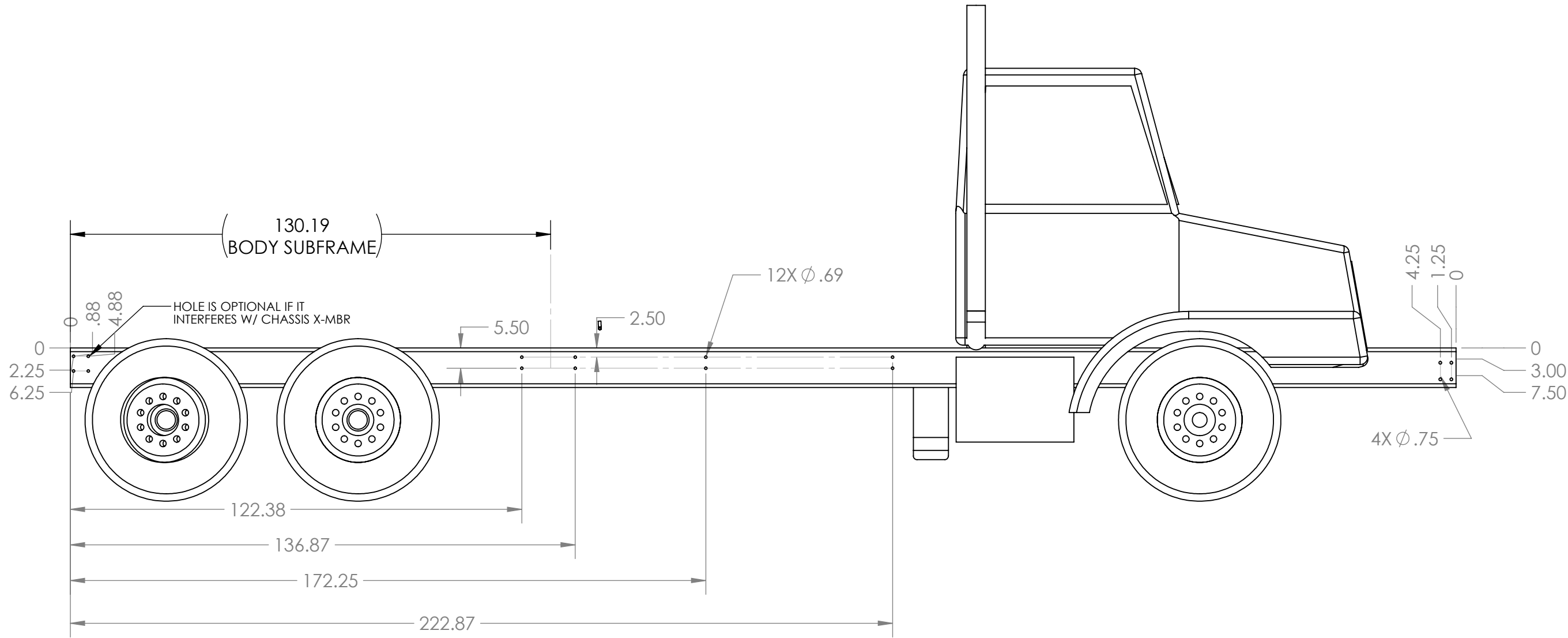
# DRIVER SIDE HOLE LAYOUT



NOTE:  
ALL HOLES ARE BOLT HOLE SIZES

DWG. NO.			REV
0024917			H
SIZE B	SCALE: 1:96	WEIGHT:	SHEET 3 OF 6

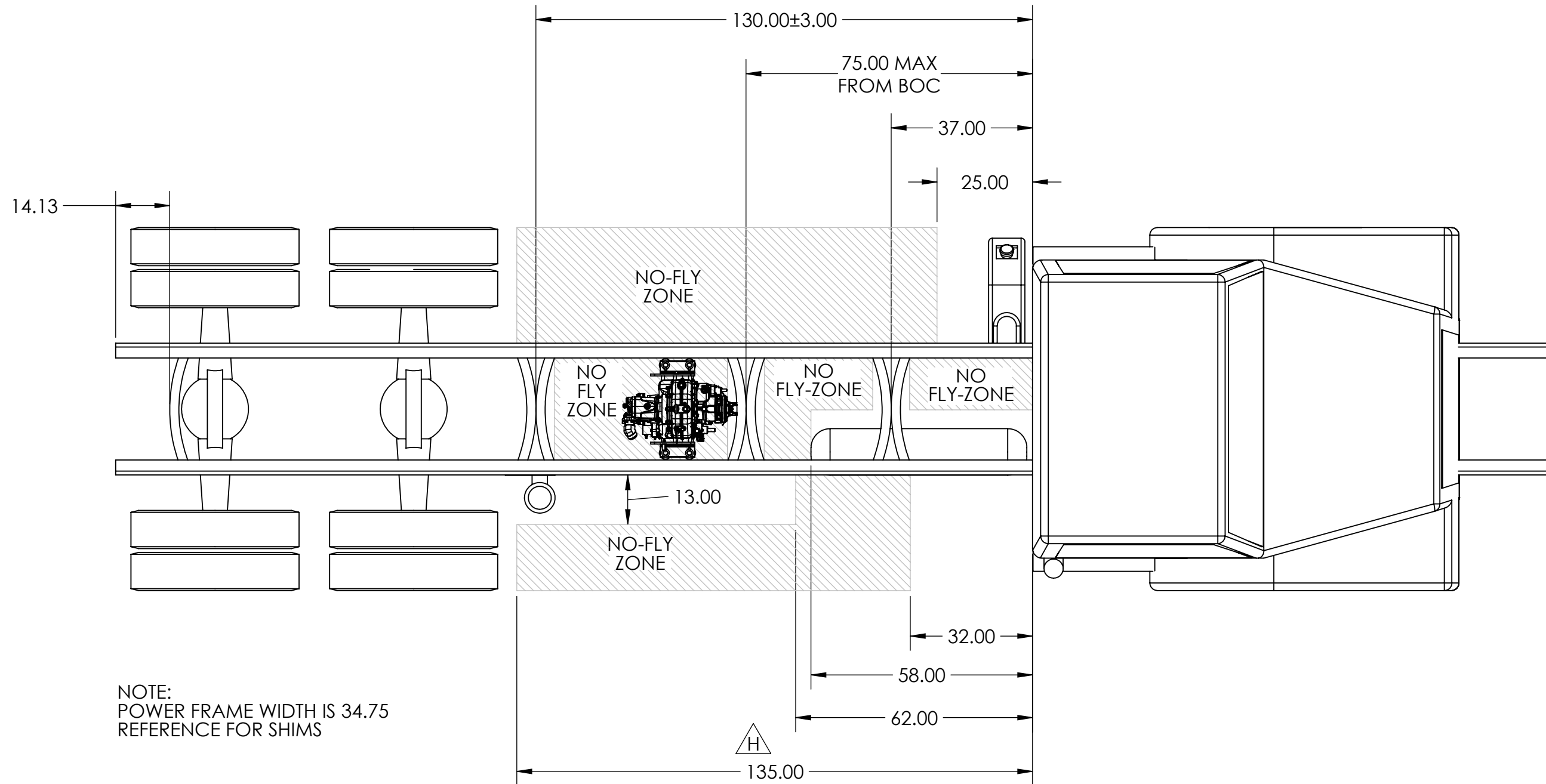
# PASSENGER SIDE HOLE LAYOUT



NOTE:  
ALL HOLES ARE BOLT HOLE SIZES  
POWER FRAME LENGTH IS 97.44

DWG. NO.			REV
<b>0024917</b>			<b>H</b>
SIZE B	SCALE: 1:96	WEIGHT:	SHEET 4 OF 6

# CROSS MEMBER LOCATION



NOTE:  
POWER FRAME WIDTH IS 34.75  
REFERENCE FOR SHIMS

DWG. NO.			REV
0024917			H
SIZE B	SCALE: 1:96	WEIGHT:	SHEET 5 OF 6

# SUPER PRODUCTS REQUIRMENTS CAMEL 1200

Item	Description	Requirement (Standard)	Requirement (High HP Config)
1	Configuration	6 x 4 SBA Conventional Cab	6 x 4 SFA Conventional Cab
2	Cab to Tandem, CT		188
3	Axle to End of Frame, AF		52
4	Frame Rail with Full Liner	3 million in-lb RBM min.	
5	Frame Drilling	Per SP Drawing	
6	Front Bumper	None	
7	Front Frame Extension	12" MIN	
8	Front Axle Load	20,000 lbs	
9	Rear Axle Load	40,000 lbs	
10	Rear Suspension	Hend. RT-403, 54" Spacing	
11	Air tanks/Dryer	Per SP Drawing	
12	Driveline Size	1710, 1760, or 1810	
13	Transfer Case Location	Prov. For Omsi X-fer case (see Sheet2)	
14	Frame Fasteners	Hex Bolts	
15	Engine Type	I-6 Wet Sleeve	
16	Horsepower	370 hp @ 2,000 rpm	450 hp @ 1,625 rpm
17	Torque	1,250 ft-lb	1,550 ft-lb
18	Exhaust position	Single RH Hor. Under cab step, Vertical Stack	
19	DFP Regeneration	Include Inhibit Switch on Dash	
20	Remote Throttle	Provision for remote throttle	
21	Engine Harness to ECM	Connector underhood	
22	Fuel Tank: Size & Location	70 gal., under cab step	100 gal., under cab step
23	Transmission	Allison 3000 RDS Automatic	Allison 4500 RDS Automatic
24	Transmission Connector	Connector underhood	
25	Body Connections	Sealed connector for DOT lighting at EOF	
26	Battery Box	Under cab step (RH BOC if not available)	
27	Battery Switch	Near Battery Box	
28	Frame Ground Post	Near Battery Box	
29	Max Chassis Weight	Front: 10,000 lbs Rear: 7,500 lbs	Front: 10,500 lbs Rear: 7,500 lbs



**SUPER PRODUCTS**  
TRUCK MOUNTED VACUUM EQUIPMENT

DWG. NO. **0024917** REV **F**

SIZE B SCALE: 1:96 WEIGHT: SHEET 6 OF 6